

Marriott & Co. is a member and affiliated to the following organisations;

International Institute of Marine Surveyors.

Institute of Marine Engineering, Science and Technology.

The Nautical Institute.

Federation of Oil Seeds and Fats Associates.

## Marriott & Co.

Suite 4, Grosvenor Mansions, Queen Street,

Deal, Kent, CT14 6ET. UK.

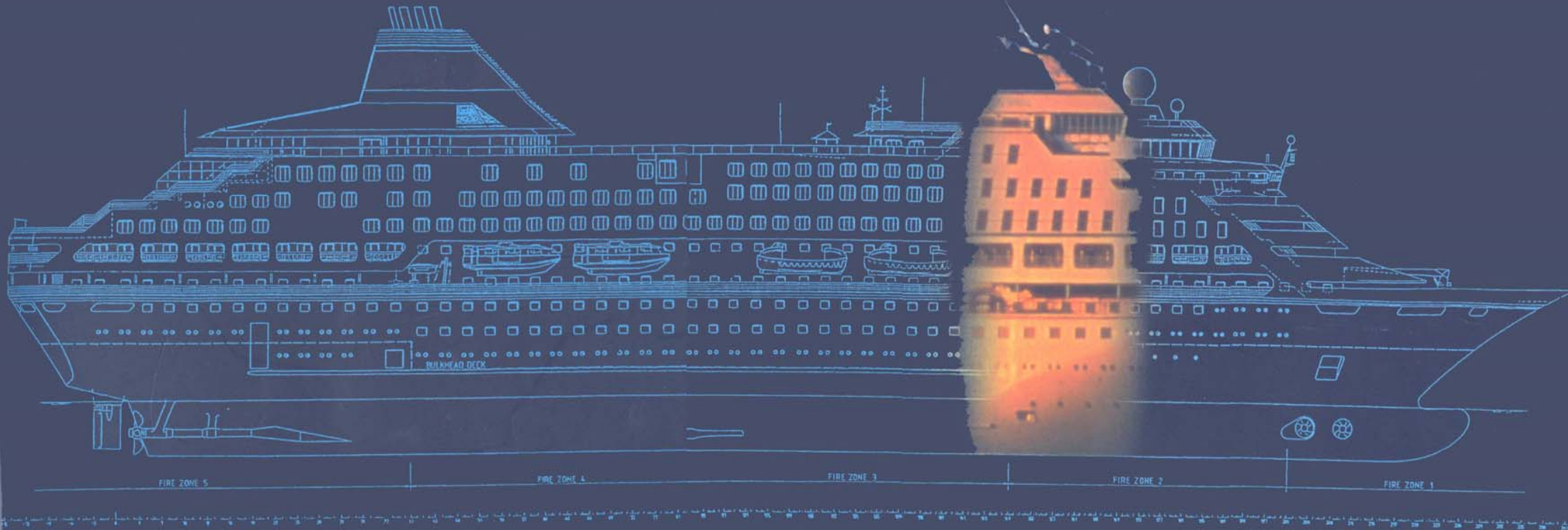
Tel: +44 (0)1304 371105

Fax: +44(0)1304 371254

AOH: +44(0) 1304 389902

Email: [mail@marriottco.com](mailto:mail@marriottco.com)

Web: [www.marriottco.com](http://www.marriottco.com)





## Introduction

Marriott & Co provides a prompt, reliable and cost effective surveying and consultancy service to the marine industry. The Company has a wide experience in providing support and expert advice in all aspects of marine operations, including technical, safety, commercial and environmental issues.

With a team of Master Mariners and Chief Engineers all with command and superintendence experience the Company has carried out hundreds of ship vetting inspections on behalf of charterers, pre purchase and on/off hire surveys for owners and operators, inspections and claim investigations on behalf of P and I clubs.

## Policy

The company is committed to providing a complete survey service to the highest levels of integrity, confidentiality and technical expertise to both the private and corporate client alike. In keeping with the professional principles of independent survey, findings are reported immediately and accurately, ensuring that clients are aware of all developments.

## Consultancy

Marriott & Co have a wide experience in providing support and expert advice in all aspects of marine operations. Covering a diverse range of vessels (bulk, general cargo, liquid, container and gas) embracing technical safety, commercial and environmental issues.

In particular, the company has an in-depth knowledge of ferry RoRo, passenger ships and container operations. The team having experience as Senior Masters, Chief Engineers and Superintendents with major operators in these fields.

Based on engineering knowledge, experience and using specialist equipment we can undertake investigation into failures or defects which give rise to damage or loss and can provide expert reports for court and other dispute settlement procedures.



## Services

Our consultants travel worldwide to attend to marine investigations and assignments, offering a comprehensive service whatever is needed. The company has developed a worldwide network of Associates which enables immediate and efficient response for clients. We have associates in Russia, Ukraine, Turkey, UAE, South Africa, India, Singapore, Thailand, China, Australia, Argentina, Brazil and the USA. With our base in the UK, we can cover all of Europe's major ports.

We offer services and consultancy to:

- Charterers
- Owners
- Lawyers
- Insurers
- P & I Clubs
- Cargo Interests
- Ports
- Ship Management
- Vessel Operators

The company office is equipped with modern equipment for electronic filing, report production and communication systems, together with efficient staff to serve your every survey need.

Survey equipment includes Ultra sonic leak detectors, for hatch cover/watertight doors and container integrity, Ultrasonic thickness gauges, gas analysers, digital cameras and camcorders.

